

ePMP™ 1000 Hotspot

REACHING THE EDGE.

The reliability of ePMP™ radio, combined with the power of service-provider-grade WLAN software, makes this easy-to-deploy single-band access point the choice for government, utility and other deployments that need to scale over time.

Cloud Management: backed by Cambium’s *cnMaestro™* cloud manager offering end to end visibility of the network and customer devices

- Single pane of management for outdoor hotspot and PTP*, PMP*, ePMP™
- Stateful alarms and dashboard views
- Multiple management options available including cloud-based, SNMP and an enriched set of RESTful interfaces

End-to-end Troubleshooting: Single dashboard view and rich statistics ensure rapid root cause detection and issue resolution

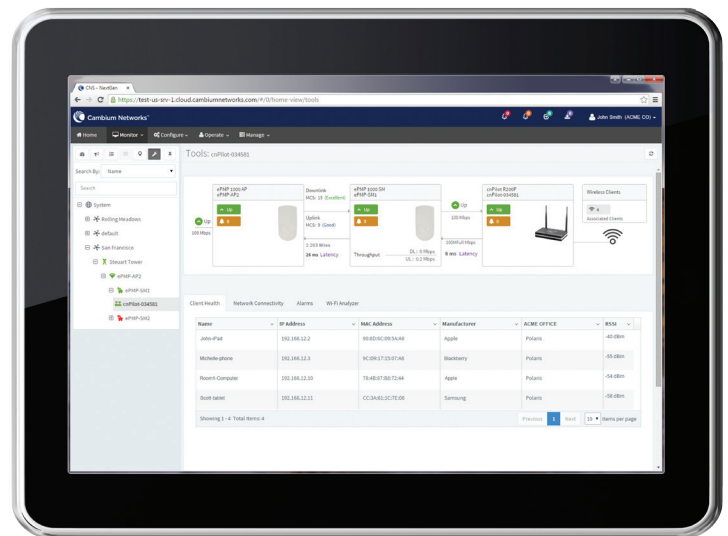
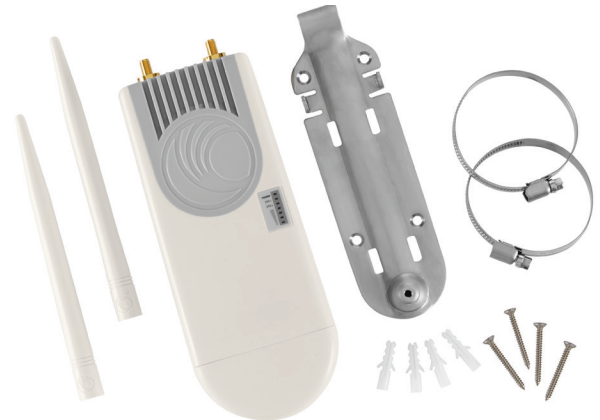
- One-click functionality reveals the health of all network nodes related to the problem area
- Troubleshoot end user client connectivity on any WLAN from a single console
- No truck roll required to debug wired or wireless connectivity configurations

Network Monetization:

- Integration with 3rd party external guest access solutions
- Onboard guest access portal for simple deployments
- Cambium PoE out to support 2nd hotspot or ePMP™ / PMP subscriber module

Security:

- Support WPA2 Enterprise and WPA2 PSK
- Secure connection over HTTPS back to the cloud for management



cnMaestro™ Dashboard

KEY FEATURES:

- 802.11n 2x2 MIMO
- 8 SSIDs supporting 128 concurrent users
- Cloud managed with no on-site controller required
- On-board captive portal
- Rate limiting per SSID and client
- Fast roaming across access points (AP)
- Auto channel selection for allocation of wireless spectrum

*Some of the features listed will be roadmap available

WLAN ACCESS POINT SPECIFICATIONS

| | |
|------------------------------|--|
| Types of Access Points (APs) | Single band (SB) 2.4 or 5 GHz APs ¹ |
| Frequency Bands Across SKUs | IEEE 802.11n: 2.4 – 2.484 GHz / 5.15 – 5.85 GHz / IEEE 802.11a: 5.15 – 5.875 GHz / IEEE 802.11g: 2.4 – 2.484 GHz |
| Stream | 2x2 MIMO |
| Range | 180 m (600 Ft) Extended ranges via 3rd party high gain antennas |
| Concurrent Clients | 128 |
| Max Throughput | 300 Mbps |
| SSID | 8 |
| Antenna | Yes. RPSMA dipole (default) |
| Antenna Gain | 4.5 ±1 dBi (2.4 GHz) 5.5 ±1 dBi (5 GHz) |
| Polarization | Vertical |
| Coverage Angles | Omni (360°) |
| Ethernet Ports | Two (2) x 10/100 |
| PoE out | Yes. Cambium PoE out with current limiting |
| Power Supply | Cambium PoE |
| Power Consumed | 5W (typical)/7W (max) |
| Dimensions (cm) | 8.9 x 21 x 3.5 |
| Weight | < 0.5 Kg |
| Temperature | -30°C to +55°C |
| Certification | IP55 |
| Tx Power | 30 dBm |

WiFi FEATURES

| | |
|-----------------------------------|---|
| MANAGED MODE | Access point can be deployed at large scale in feature rich <i>cn</i> Maestro controller managed mode |
| AUTONOMOUS MODE | Capable of operating autonomously when connection to <i>cn</i> Maestro controller is lost |
| SECURE WLAN | WPA-TKIP, WPA2 AES |
| DEPLOYMENT MODEL | Stand-alone APs or Cloud Managed WiFi APs |
| HOTSPOT CAPTIVE PORTAL | Stand-alone mode AP based hotspot server. Also supports hotspot redirection to a 3rd party Hotspot server |
| AUTHENTICATION | Secure Web page, RADIUS based 802.1x including EAP-SIM/AKA, AP-PEAP, EAP-TTLS, and EAP-TLS |
| SCHEDULED SSID | Turns SSID ON/OFF on a daily/weekly/time of day basis |
| USER DATA LIMITING | Rate limiting of client traffic: Cap utilization based on data rates, max data rates and time interval |
| SUBSCRIBER QOS | WMM |
| CLIENT ISOLATION | Yes |
| FAST ROAMING | Controller-less fast roaming supported |
| AUTOMATIC CHANNEL SELECTION | Yes |
| NAT (NETWORK ADDRESS TRANSLATION) | Yes |
| DHCP SERVER | Yes |
| FIREWALL | Yes |

MANAGEMENT FEATURES

| | |
|----------------------|--|
| GUI | Simple intuitive web browser enabled tabbed GUI to simplify complex network views |
| COMMON FRAMEWORK | One-single-pane-of-glass from which to manage both the Point-to-point, Point-to-multipoint and Cambium PMP WLAN solutions |
| ON-BOARDING | Secure large scale bulk onboarding Zero touch bulk configuration and provisioning |
| DEVICE INVENTORY | Inventory tracking and reporting |
| MONITORING | Insightful status monitoring; rich visibility to device lifecycle Alarms and events management – Critical/Major/Minor Statistics graphs and table display Alarm traffic light display |
| KEY STATS MONITORING | Near real time stats monitoring, aggregation and reporting |
| SOFTWARE UPGRADE | Bulk upgrade with ability to upgrade 100+ managed devices (such as WLAN APs) at a time, with upgrade status report |

Ordering Information

ePMP™ 1000 hotspot 802.11n 2.4 GHz or 5GHz WiFi AP with dipole Antennas, & Mounting bracket
Available for: C024095H021A (2.4 GHz, FCC, ROW, US Cord) and C024095H221A (2.4 GHz, EU, ROW, EU cord), C005095H023A (5 GHz EU), C005095H122A (5 GHz,FCC), C005095H021A (5GHz, ROW, US Cord), and C005095H221A (5 GHz, ROW, EU cord)

¹The hardware specifications are based on ePMP 1000 Connectorized Radio

© 2015 Cambium Networks Ltd. All rights reserved.

CN ePMP™ 1000 Hotspot SS 08242015