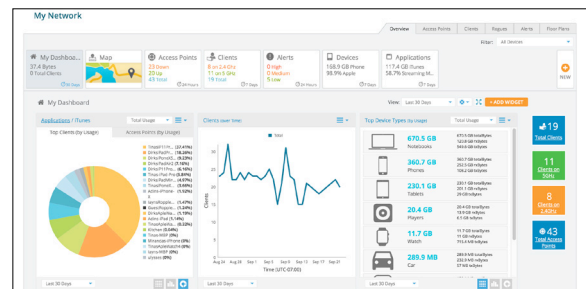


XMS-Cloud Management System

QUICK LOOK:

- Turn-key cloud-hosted management for Cambium Networks Wi-Fi 6 and Xirrus
- Complete application visibility and policy control of 2,000+ apps
- Single Sign-On (SSO) integration for user access with Microsoft Azure and Google G Suite
- Robust multi-level security for privacy and data protection
- Integrated EasyPass Access for Guest, BYOD and IoT



XMS-Cloud is a powerful management solution for deploying and managing Cambium Networks Wi-Fi and Switching portfolios with complete control and visibility. It provides zero-touch activation to automated software upgrades, patches, and licenses. IT enjoys the benefits of a superior console interface where all services are integrated at no extra cost. The system supports Wi-Fi devices, including IoT endpoints, regardless of operating system. DPI technology lets network administrators control up to 2,000 applications at the network's edge where they can be allowed, blocked, or throttled to achieve predictable performance, even under heavy network load.

As budgets diminish and time becomes a scarce commodity, cloud services bring affordability and efficiency to network management. XMS-Cloud is a powerful solution for deploying and managing your Wi-Fi network with complete control and visibility.

XMS-Cloud Management System

Key Benefits

MASSIVE SCALABILITY

XMS-Cloud accommodates current and future needs as Wi-Fi device use continues to grow and user habits change. Built on the same scalable, next-generation NoSQL database used by the largest internet companies, Cambium Networks' XMS-cloud supports multi-tenancy and networks using tens of thousands of access points (AP) and clients. Flexible SaaS scales to support peak usage scenarios.

SIMPLE USER AND DEVICE ACCESS

EasyPass makes the Wi-Fi connection experience virtually seamless for end users because it does not require users to download applications or install certificates. Employees with minimal technical knowledge can easily and securely connect personal devices to the corporate network using Microsoft, Google or simple IT-issued credentials.

HIGHLY RESILIENT

XMS-Cloud architecture is built with no centralized dependencies and no single-point-of-failure. This ensures system resiliency for mission-critical applications. XMS-Cloud offers complete data center redundancy and data replication for guaranteed service availability. Cloud platforms aren't failure points, even if the network goes down- APs act autonomously even if a cloud connection is lost, meaning security and traffic are processed directly at the network edge in each AP.

ROBUST SECURITY

Multi-level security is fundamental to XMS-Cloud architecture to ensure privacy of data and protection from external exploits. Multi-tenancy isolates customer data, and encryption prevents visibility of communications between a customer site and the cloud. User data is kept separate from management data whereby only management data enters the cloud. XMS-Cloud was developed using the latest cutting-edge web technologies to ensure a future-ready platform able to meet the growing and ever-changing needs of enterprises, educational institutions, and service providers. Xirrus cloud technology includes TLS for robust security and firewall-friendly communications, bi-directional messaging protocols for nearly instantaneous changes and alerts, and a NoSQL distributed database to handle today's increasing performance demands.

TRACK GUEST ACTIVITIES

EasyPass Guest enables guests to self-register or use their social media credentials to connect. IT administrators gain full visibility into guest activities and the control to enforce access policies from anywhere via cloud management.

APPLICATION PRIORITIZATION

Cambium Application Control makes it easy to control data traffic at the network edge by identifying and enforcing policy against 2,000+ applications. It allows for granular control with Deep Packet Inspection (DPI). It provides for improved user experience with application prioritization and reduced security risk by blocking risky applications.

LOCATION SERVICES

The Xirrus Positioning System (XPS) empowers you by enabling contextual location data to deliver unique user experiences for thousands of visitors simultaneously ideal for retail shops, public malls, convention centers, sports arenas and more. XPS is the only solution that distributes intensive client location calculation across all APs in the network to achieve massive computational scale. XPS easily integrates with third party, industry-specific and other applications via a standards-based push/pull RESTful JSON API so businesses can interact with customers and deliver unique, value-added services. TLS security through the https protocol ensures secure transmission of location data.

XMS-Cloud Management System

Management System Details

Deployment

- Cloud-Hosted Web Portal
- Managed Service Provider Accounts
- Multi-Tenant Provisioning
- Redundant Cloud Services

Visualization

- Fully Customizable Dashboards
- Dashboard Filter by AP Group, Profile, SSID
- Supports Wi-Fi 6 and Xirrus Wi-Fi
- Geographical Maps for Site Location
- RF Coverage Heat Maps

Monitoring

- Fully Customizable Dashboards
- 20 Dashboard Widget Options
- Trending Views by Hour, Day, Week, Month
- Multi-Level Severity Alerting
- Email and SMS Alert Notification

Onboarding and Provisioning

- Zero-Touch Provisioning
- Profile-based Configuration
- Assign Default Profile
- Automatic Bulk Software Update
- Schedule Software Updates

Access Services

- Integrated EasyPass Access Services
- Customizable Guest Portals (Self Register or Ambassador)
- Social Login, Mobile Number Collection, Ad insertion
- One-Click and Voucher Portals
- Microsoft Azure and Google G Suite SSO Portals
- Onboarding Portal for BYOD and IoT
- Self Onboarding
- Personal Wi-Fi Portal

Security

- Rogue AP Detection and Location
- AP Communications Over SSL
- No Inbound Internet Access
- Not-in-Traffic Path (GRE exception)
- Disaster Recovery

Location Services

- Integrated Location with Floor Plans
- Client X-Y Location with Device Identification
- Rogue AP X-Y Location

Analytics

- Dwell Time Over Time – 4 Ranges
- Number of Visitors Over Time – New, Recurring
- 1 Year Data Retention

Client Troubleshooting

- Client Health Score
- Client Health Statistics Over Time
- Client Application Usage
- Forensic View by Hour, Day, Week, Month

Application Visibility

- 2,000+ Applications by Category and App
- Top Clients by Application
- Top APs by Application

Policy Control

- L2/3 Firewall
- L7 Application Control
- Air Cleaner Filter
- Policies by User Group, Device Type, SSID, Personal SSID, or Globally
- Time of Day

Reporting

- Customized Report Generator
- Scheduled Email Reports
- Filter by AP Group, Profile, SSID
- 1 Year Historical Data Retention
- RESTful Monitoring/Provisioning API
- Export UI Tables in CSV or PDF

Administration

- Role-based Access
- Audit Trail
- Command Line History
- SSO through Azure, Google, and Generic SAML

XMS-Cloud Management System

Ordering Information

XMSC-SUB-2R-1	XMS-Cloud 1-year subscription: 2-radio AP with EasyPass Guest Self-Registration and Guest Ambassador modules and Cambium Care Advanced Support
XMSC-SUB-2R-3	XMS-Cloud 3-year subscription: 2-radio AP with EasyPass Guest Self-Registration and Guest Ambassador modules and Cambium Care Advanced Support
XMSC-SUB-2R-5	XMS-Cloud 5-year subscription: 2-radio AP with EasyPass Guest Self-Registration and Guest Ambassador modules and Cambium Care Advanced Support
XMSC-SUB-4R-1	XMS-Cloud 1-year subscription: 4-radio AP with EasyPass Guest Self-Registration and Guest Ambassador modules and Cambium Care Advanced Support
XMSC-SUB-4R-3	XMS-Cloud 3-year subscription: 4-radio AP with EasyPass Guest Self-Registration and Guest Ambassador modules
XMSC-SUB-4R-5	XMS-Cloud 5-year subscription: 4-radio AP with EasyPass Guest Self-Registration and Guest Ambassador modules and Cambium Care Advanced Support
XMSC-EDU-SUB-2R-1	XMS-Cloud 1-year subscription for Education: 2-radio AP with all EasyPass modules and Cambium Care Advanced Support
XMSC-EDU-SUB-2R-3	XMS-Cloud 3-year subscription for Education: 2-radio AP with all EasyPass modules and Cambium Care Advanced Support
XMSC-EDU-SUB-2R-5	XMS-Cloud 5-year subscription for Education: 2-radio AP with all EasyPass modules and Cambium Care Advanced Support
XMSC-EDU-SUB-4R-1	XMS-Cloud 1-year subscription for Education: 4-radio AP with all EasyPass modules and Cambium Care Advanced Support
XMSC-EDU-SUB-4R-3	XMS-Cloud 3-year subscription for Education: 4-radio AP with all EasyPass modules and Cambium Care Advanced Support
XMSC-EDU-SUB-4R-5	XMS-Cloud 5-year subscription for Education: 4-radio AP with all EasyPass modules and Cambium Care Advanced Support

XMS-Cloud Management System

Ordering Information

EASY-SUB-2R-1	EasyPass 1-year subscription for a 2-radio AP operating with XMS-Cloud or XMS-Enterprise
EASY-SUB-2R-3	EasyPass 3-year subscription for a 2-radio AP operating with XMS-Cloud or XMS-Enterprise
EASY-SUB-2R-5	EasyPass 5-year subscription for a 2-radio AP operating with XMS-Cloud or XMS-Enterprise
EASY-SUB-4R-1	EasyPass 1-year subscription for a 4-radio AP operating with XMS-Cloud or XMS-Enterprise
EASY-SUB-4R-3	EasyPass 3-year subscription for a 4-radio AP operating with XMS-Cloud or XMS-Enterprise
EASY-SUB-4R-5	EasyPass 5-year subscription for a 4-radio AP operating with XMS-Cloud or XMS-Enterprise



ABOUT CAMBIUM NETWORKS

Cambium Networks empowers millions of people with wireless connectivity worldwide. Its wireless portfolio is used by commercial and government network operators as well as broadband service providers to connect people, places and things. With a single network architecture spanning fixed wireless and Wi-Fi, Cambium Networks enables operators to achieve maximum performance with minimal spectrum. End-to-end cloud management transforms networks into dynamic environments that evolve to meet changing needs with minimal physical human intervention. Cambium Networks empowers a growing ecosystem of partners who design and deliver gigabit wireless solutions that just work.

cambiumnetworks.com

08192020