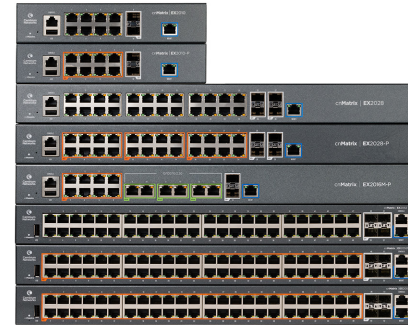


# cnMatrix Switches, Accessories & Compatibility



## 1 cnMatrix Switches

1.1 Available Outside the US:

Model	Part #	Description
cnMatrix   EX1010	MX-EX1010xxA-O	cnMatrix EX1010, Intelligent Ethernet Switch, 8 1-Gbps and 2 1-Gbps SFP fiber ports - no pwr cord
cnMatrix   EX1010-P	MX-EX1010PxA-O	cnMatrix EX1010-P, Intelligent Ethernet PoE+ Switch, 8 1-Gbps and 2 1-Gbps SFP fiber ports - no pwr cord
cnMatrix   EX1028	MX-EX1028xxA-O	cnMatrix EX1028, Intelligent Ethernet Switch, 24 1-Gbps and 4 1-Gbps SFP fiber ports - no pwr cord
cnMatrix   EX1028-P	MX-EX1028PxA-O	cnMatrix EX1028-P, Intelligent Ethernet PoE+ Switch, 24 1-Gbps and 4 1-Gbps SFP fiber ports - no pwr cord
cnMatrix   EX1010	MX-EX1010xxA-E	cnMatrix EX1010, Intelligent Ethernet Switch, 8 1-Gbps and 2 1-Gbps SFP fiber ports - no pwr cord - EMEA Only
cnMatrix   EX1010-P	MX-EX1010PxA-E	cnMatrix EX1010-P, Intelligent Ethernet PoE+ Switch, 8 1-Gbps and 2 1-Gbps SFP fiber ports - no pwr cord - EMEA Only
cnMatrix   EX1028	MX-EX1028xxA-E	cnMatrix EX1028, Intelligent Ethernet Switch, 24 1-Gbps and 4 1-Gbps SFP fiber ports - no pwr cord - EMEA Only
cnMatrix   EX1028-P	MX-EX1028PxA-E	cnMatrix EX1028-P, Intelligent Ethernet PoE+ Switch, 24 1-Gbps and 4 1-Gbps SFP fiber ports - no pwr cord - EMEA Only
cnMatrix   EX2052-P	MXEX2052GxPA00	cnMatrix EX2052-P, Intelligent Ethernet PoE Switch, 48 1G and 4 SFP+ Fixed 540 - no pwr cord
cnMatrix   EX2052R-P	MXEX2052GxPA10	cnMatrix EX2052R-P, Intelligent Ethernet PoE Switch, 48 1G and 4 SFP+, Removeable Power Supply (not included) - no pwr cord
cnMatrix   EX2052	MXEX2052GxxA00	cnMatrix EX2052, Intelligent Ethernet Switch, 48 1G and 4 SFP+ - no pwr cord
cnMatrix   EX2016M-P	MXEX2016MxPA00	cnMatrix EX2016M-P, Intelligent Ethernet PoE Switch, 8x1G+6x2.5G+2xSFP+, no pwr cord
cnMatrix   EX2010	MX-EX2010xxA-O	cnMatrix EX2010, Intelligent Ethernet Switch, 8 1G and 2 SFP fiber ports - no pwr cord
cnMatrix   EX2010-P	MX-EX2010PxA-O	cnMatrix EX2010-P, Intelligent Ethernet PoE Switch, 8 1G and 2 SFP fiber ports - no pwr cord
cnMatrix   EX2028	MX-EX2028xxA-O	cnMatrix EX2028, Intelligent Ethernet Switch, 24 1G and 4 SFP+ fiber ports - no pwr cord
cnMatrix   EX2028-P	MX-EX2028PxA-O	cnMatrix EX2028-P, Intelligent Ethernet PoE Switch, 24 1G and 4 SFP+ fiber ports - no pwr cord
TX2012R-P	MXTX2012GxPA10	cnMatrix TX2012R-P, Intelligent Ethernet PoE Switch, Cambium Sync, 8 x 1gbps, and 4 SFP+, Removeable Power Supply (not included) - no pwr cord
TX2020R-P	MXTX2020GxPA10	cnMatrix TX2020R-P, Intelligent Ethernet PoE Switch, Cambium Sync, 16 x 1gbps and 4 SFP+, Removeable & Redundant Power Supplies (not included) - no pwr cord

## 1.2 US Part Numbers

Model	Part #	Description
cnMatrix   EX1010	MX-EX1010xxA-1	cnMatrix EX1010, Intelligent Ethernet Switch, 8 1-Gbps and 2 1-Gbps SFP fiber ports - no pwr cord, USA Only
cnMatrix   EX1010-P	MX-EX1010PxA-1	cnMatrix EX1010-P, Intelligent Ethernet PoE+ Switch, 8 1-Gbps and 2 1-Gbps SFP fiber ports - no pwr cord, USA Only
cnMatrix   EX1028	MX-EX1028xxA-1	cnMatrix EX1028, Intelligent Ethernet Switch, 24 1-Gbps and 4 1-Gbps SFP fiber ports - no pwr cord, USA Only
cnMatrix   EX1028-P	MX-EX1028PxA-1	cnMatrix EX1028-P, Intelligent Ethernet PoE+ Switch, 24 1-Gbps and 4 1-Gbps SFP fiber ports - no pwr cord, USA Only
cnMatrix   EX2016M-P	MXEX2016MxPA01	cnMatrix EX2016M-P, Intelligent Ethernet PoE Switch, 8x1G+6x2.5G+2xSFP+, no pwr cord, USA Only
cnMatrix   EX2052	MXEX2052GxxA01	cnMatrix EX2052, Intelligent Ethernet Switch, 48 1G and 4 SFP+ - no pwr cord, USA Only
cnMatrix   EX2052-P	MXEX2052GxPA01	cnMatrix EX2052-P, Intelligent Ethernet PoE Switch, 48 1G and 4 SFP+ Fixed 540 - no pwr cord, USA Only
cnMatrix   EX2052R-P	MXEX2052GxPA11	cnMatrix EX2052R-P, Intelligent Ethernet PoE Switch, 48 1G and 4 SFP+, Removeable Power Supply (not included) - no pwr cord, USA Only
cnMatrix   EX2010	MX-EX2010xxA-U	cnMatrix EX2010, Intelligent Ethernet Switch, 8 1G and 2 SFP fiber ports - USA pwr cord
cnMatrix   EX2010-P	MX-EX2010PxA-U	cnMatrix EX2010-P, Intelligent Ethernet PoE Switch, 8 1G and 2 SFP fiber ports - USA pwr cord
cnMatrix   EX2028	MX-EX2028xxA-U	cnMatrix EX2028, Intelligent Ethernet Switch, 24 1G and 4 SFP+ fiber ports - USA pwr cord
cnMatrix   EX2028-P	MX-EX2028PxA-U	cnMatrix EX2028-P, Intelligent Ethernet PoE Switch, 24 1G and 4 SFP+ fiber ports - USA pwr cord
TX2012R-P	MXTX2012GxPA11	cnMatrix TX 2012R-P, Intelligent Ethernet PoE Switch, Cambium Sync, 8 x 1gbps, and 4 SFP+, Removeable Power Supply (not included) - no pwr cord, USA Only
TX2020R-P	MXTX2020GxPA11	cnMatrix TX 2020R-P, Intelligent Ethernet PoE Switch, Cambium Sync, 16 x 1gbps and 4 SFP+, Removeable & Redundant Power Supplies (not included) - no pwr cord, USA Only

## 2 cnMatrix Accessories

Part #	Description
MXCRPSAC600A0	CRPS - AC - 600W total Power, no power cord
MXCRPSAC930A0	CRPS - AC - 930W total Power, no power cord
MXCRPSAC1200A0	CRPS - AC - 1200W total Power, no power cord
MXCRPSDC600A0	CRPS - DC - 600W total Power, 36v-72v, includes 3m cable connector
MXCRPSDC930A0	CRPS - DC - 930W total Power, 36v-72v, includes 3m cable connector
MXCRPSDC1200A0	CRPS - DC - 1200W total Power, 36v-72v, includes 3m cable connector
MX-EXTXFULLA-1	cnMatrix 19" Rack mount kit: Full-width switch and wall mount kit
MX-EXTXHALFA-0	cnMatrix 19" Rack mount kit: EX2010-P, EX2010, EX1010-P, EX1010
MX-Rack-TX2K-0	cnMatrix 19" Rack mount kit: TX2012R-P
SFP-10G-Copper	10G Base-T (RJ45) SFP Transceiver. 0C to 70C
SFP-10G-LR	10G SFP+ SMF LR Transceiver, 1310nm. -40C to 85C
SFP-10G-SR	10G SFP+ MMF SR Transceiver, 850nm. -40C to 85C
SFP-1G-Copper	1000Base-T (RJ45) SFP Transceiver. -40C to 85C
SFP-1G-LX	1G SFP SMF LX Transceiver, 1310nm. -40C to 85C
SFP-1G-SX	1G SFP MMF SX Transceiver, 850nm. -40C to 85C

AC Line Cord SKU	Description
N000900L040A	AC line cord, US Type B, 1.2m C13 connector
N000900L092A	AC line cord, US Type B, 15A, 1.2m C13 connector
N000900L045A	AC line cord, UK Type G angled, 1.2m C13 connector
N000900L043A	AC line cord, IN Type D angled, 1.2m C13 connector
N000900L041A	AC line cord, EU Type F angled, 1.2m C13 connector
N000900L042A	AC line cord, ANZ Type I, 1.2m C13 connector
N000900L046A	AC line cord, CN Type I angled, 1.2m C13 connector
N000900L044A	AC line cord, BR Type N, 1.2m C13 connector
N000900L093A	AC line cord, BR Type N, 15A, 1.2m C13 connector
N000900L047A	AC line cord, AR Type I, 1.2m C13 connector
N000900L041A	AC line cord, EU Type F angled, 1.2m C13 connector
N000900L041A	AC line cord, EU Type F angled, 1.2m C13 connector
N000900L041A	AC line cord, EU Type F angled, 1.2m C13 connector
N000900L041A	AC line cord, EU Type F angled, 1.2m C13 connector
N000900L048A	AC line cord, ZA Type M angled, 0.72m C13 connector
N000900L042A	AC line cord, ANZ Type I, 1.2m C13 connector

### 3 Accessory Compatibility

#### 3.1 Compatibility for Power Cords

Country/Region	Input Voltage	Switches with Internal Power supplies	CRPS AC - 600	CRPS AC - 930	CRPS AC - 1200
US	110V	N000900L040A	N000900L040A	N000900L092A	N000900L092A
US	220V				
UK	220V	N000900L045A	N000900L045A	N000900L045A	N000900L045A
India	220V	N000900L043A	N000900L043A	N000900L043A	N000900L043A
EU	220V	N000900L041A	N000900L041A	N000900L041A	N000900L041A
AUS	220V	N000900L042A	N000900L042A	N000900L042A	N000900L042A
China	220V	N000900L046A	N000900L046A	N000900L046A	N000900L046A
Brazil	110V	N000900L044A	N000900L044A		
Brazil	220V	N000900L044A	N000900L044A	N000900L044A	N000900L044A
Argentina	220V	N000900L047A	N000900L047A	N000900L047A	N000900L047A

### 3.2 Compatibility for Transceivers

	Part Numbers					
	SFP-1G-SX	SFP-1G-LX	SFP-1G-Copper	SFP-10G-SR	SFP-10G-LR	SFP-10G-Copper
EX1010	Yes	Yes	Yes	No	No	No
EX1010-P	Yes	Yes	Yes	No	No	No
EX1028	Yes	Yes	Yes	No	No	No
EX1028-P	Yes	Yes	Yes	No	No	No
EX2010	Yes	Yes	Yes	No	No	No
EX2010-P	Yes	Yes	Yes	No	No	No
EX2028	Yes	Yes	Yes	yes	yes	yes
EX2028-P	Yes	Yes	Yes	Yes	Yes	Yes
EX2016M-P	Yes	Yes	Yes	Yes	Yes	Yes
EX2052	Yes	Yes	Yes	Yes	Yes	Yes
EX2052-P	Yes	Yes	Yes	Yes	Yes	Yes
EX2052R-P	Yes	Yes	Yes	Yes	Yes	Yes
TX2012R-P	Yes	Yes	Yes	Yes	Yes	Yes
TX2020R-P	Yes	Yes	Yes	Yes	Yes	Yes

### 3.3 Compatibility for Rack Mount Ears

Model	Port Configuration	Includes Rack mount ears	MX-EXTXHALFA-0	MX-EXTXFULLA-1	MX-Rack-TX2K-0
cnMatrix   EX1010	8 Port non PoE	No	19" Rack	Wall	NA
cnMatrix   EX1010-P	8 Port PoE	No	19" Rack	Wall	NA
cnMatrix   EX1028	24 Port non PoE	Yes	NA	19" Rack or Wall	NA
cnMatrix   EX1028-P	24 Port PoE	Yes	NA	19" Rack or Wall	NA
cnMatrix   EX2010	8 Port non PoE	No	19" Rack	Wall	NA
cnMatrix   EX2010-P	8 Port PoE	No	19" Rack	Wall	NA
cnMatrix   EX2028	24 Port non PoE	Yes	NA	19" Rack or Wall	NA
cnMatrix   EX2028-P	24 Port PoE	Yes	NA	19" Rack or Wall	NA
cnMatrix   EX2016M-P	16 Port PoE - 6x2.5G	Yes	NA	19" Rack or Wall	NA
cnMatrix   EX2052	48 Port Non PoE	Yes	NA	19" Rack or Wall	NA
cnMatrix   EX2052-P	48 Port PoE - fixed 520W	Yes	NA	19" Rack or Wall	NA
cnMatrix   EX2052R-P	48 Port PoE - CRPS	Yes	NA	19" Rack or Wall	NA
cnMatrix   TX2012R-P	8 Port PoE - CRPS	Yes	NA	19" Rack or Wall	19" Rack
cnMatrix   TX2020R-P	16 Port PoE - CRPS	Yes	NA	19" Rack or Wall	NA

#### ABOUT CAMBIUM NETWORKS

Cambium Networks delivers wireless communications that work for businesses, communities and cities worldwide. Millions of our radios are deployed to connect people, places and things with a unified wireless fabric that spans multiple standards and frequencies of fixed wireless and Wi-Fi, all managed centrally via the cloud. Our multi-gigabit wireless fabric offers a compelling value proposition over traditional fiber and alternative wireless solutions. We work with our Cambium certified ConnectedPartners to deliver purpose-built networks for service provider, enterprise, industrial, and government connectivity solutions in urban, suburban, and rural environments, with wireless that just works.

[cambiumnetworks.com](http://cambiumnetworks.com)