

# XV2-2T Wi-Fi 6 Outdoor Access Point

802.11ax dual-radio, 2x2

## QUICK LOOK:

- **Dual radio 802.11ax**
- **2.5 GbE Uplink Ethernet**
- **1 GbE with power out**
- **Outdoor IP67 rated, -40°C to 65°C**

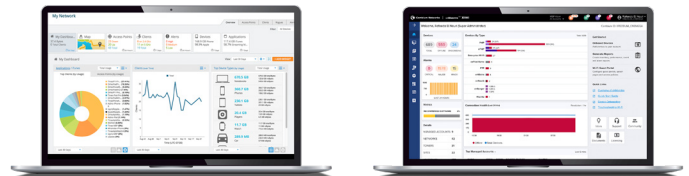


## OUTDOOR WI-FI 6 DESIGNED FOR GREATER RANGE AND SPEED

The XV2-2T is a dual radio Wi-Fi 6 access point (AP) designed for outdoor deployments in Wi-Fi hotspots, outdoor enterprise networks, hospitality, and education markets. The XV2 2T features surge suppression up to 4kV and an LTE co-existence filter.

The XV2-2T delivers Cambium 30VDC power out, or 48VDC for PoE devices connected to the second gigabit Ethernet port. Ideal for connecting the XV2-2T to a Cambium subscriber module (SM), Terragraph CN (connection node), or any IP and Ethernet device such as a security IP camera, or another Wi-Fi access point.

The new IEEE 802.11ax standard delivers higher network speeds and enables more connected devices at higher packet quality. In outdoor deployments, the IEEE 802.11ax standard delivers greater range by boosting the RF frame preamble by 3dB and improved signal quality with increased guard interval vs previous Wi-Fi technology. The XV2-2T is fully backward compatible with existing Wi-Fi technology and prepares a network for higher growth and greater density of Wi-Fi connected devices.



## CLOUD OR ON-PREMISES MANAGEMENT

XV2-2T continues the enterprise network convergence with edge-intelligent AP managed by application-intelligent Cambium Networks XMS or cnMaestro™ management system. Choose the management system that best fits your business and use the latest technology from Cambium Networks.

## XV2-2T Wi-Fi 6 Outdoor Access Point

### Access Point Specifications

*Note: Some features will be included on subsequent firmware releases.*

**FCC** Ch 1–11, 36–48, 52–64, 100–144, 149–165

**ISED** Ch 1–11, 36–48, 52–64, 100–144, 149–165

**ETSI** Ch 1–13, 36–48, 52–64, 100–144

**ROW** (Individual country limits may apply)

Ch 1–14, 36–48, 52–64, 100–144, 149–177

2400–2483.5 MHz, 5150–5895 MHz

**Radios**      **5 GHz** 802.11 a/n/ac Wave 2/ax, 2x2  
                  **2.4 GHz** 802.11 b/g/n/ax, 2x2  
                  BLE 4.1

**Wi-Fi**        802.11 a/b/g/n/ac Wave 2/ax

**SSID Security**    WPA3, WPA2 (CCMP, AES, 802.11i), WPA2 Enterprise (802.1x/EAP), WPA PSK (TKIP), Open

**Max PHY Rate**    **5 GHz radio** 1,201 Mbps  
                  **2.4 GHz radio** 573.5Mbps

**Ports**         1 x IEEE 100/1000/2500 Mbps  
                  1 x IEEE 10/100/1000 Mbps Ethernet with SW configurable passive PoE output of 30V or 48V up to 30 Watts

**Antenna**      **5 GHz**    9.3 dBi, Omni  
                  **2.4 GHz** 5.3 dBi, Omni

**Max EIRP**     **5 GHz**    36 dBm  
                  **2.4 GHz** 33 dBm  
                  *EIRP may be limited by country regulations*

**LTE Filter Band**    38, 40

**Power**            20W max  
                  Up to 50W when powering an auxiliary device

**Dimensions**    582 mm x 200 mm x 80 mm  
                  (22.91 in x 7.87 in x 3.15 in)

**Weight**         1,200 g (2.64 lbs)

**Security**        Kensington lock slot

**LEDs**            Multi-color status LEDs

**Ambient Operation Temperature**    -40°C to 65°C  
                  (-40°F to 149°F)

**Storage Temperature**                -40°C to 70°C  
                  (-40°F to 158°F)

**Humidity**        95% RH non-condensing

**MTBF**            25°C = 661,200 hours  
                  65°C = 187,375 hours

**Mount Options**   Pole or wall mounting.  
                  **Pole diameter:** MIN 30 mm / MAX 75 mm

**Certifications (Compliance)**    Wi-Fi Alliance 802.11 a/b/g/n/ac/ax, PP2.0, FCC, IC, CE, EN 60601-1-2, EN 60950-1, IEC 62368-1 Safety, EN 60601-1-2 Medical, EN 61000-4-2/3/5 Immunity, EN 50121-1 Railway EMC, EN 50121-4 Railway Immunity, IEC 61373 Railway Shock & Vibration, EN 62311 Human Safety/RF Exposure, WEEE & RoHS

## XV2-2T Wi-Fi 6 Outdoor Access Point

### Management

*Note: Some features will be included on subsequent firmware releases.*



**Cambium Networks XMS** leverages intelligent APs with an embedded edge controller to deliver edge services at any network density. XMS management plane is a cloud-first technology with a simple and easy-to-use interface delivering application L7 policy-based control, EasyPass BYOD secure access, and an MSP dashboard with drag-and-drop design.



**Cambium Networks cnMaestro™** uses a distributed intelligence architecture with cloud-first management and edge-intelligent APs that self-optimize for the RF environment. cnMaestro delivers a single pane-of-glass management for Cambium broadband fixed wireless, cnMatrix Ethernet switches, enterprise-grade Wi-Fi APs and service provider residential routers.

	XMS Management	cnMaestro Management
<b>Deployment</b>	Xirrus Management System (XMS-Cloud)	cnMaestro Cloud, cnMaestro on-premises, Standalone AP
<b>Services</b>	Deep Packet Inspection (DPI) Application Visibility and Control EasyPass Access Service	Monetized, cloud-managed guest portal with design tools
<b>APIs</b>	RESTful management and statistics API Location API	RESTful management and statistics API Location API Webhooks
<b>Captive Portal</b>	Web page redirect, landing page, redirect to internal or external server, landing page and authentication Client isolation per SSID, per network Client rate limiting per SSID EasyPass, Guest Ambassador Click-through authentication Microsoft Azure and Google G Suite SSO integration	Hosted on cnMaestro or hosted on site AP Redirect to HTTP/RADIUS external portal/authentication Active Directory integration, Google, Facebook, Office 365 integration Data rate, time duration, data throughput limit Server DNS logging, Hotspot 2.0/Passpoint 2.0 Credit Card Merchant billing, ePSK, Vouchers
<b>Accounting</b>	RADIUS accounting, load balancing AAA servers, Dynamic Authorization COA, DM	

## XV2-2T Wi-Fi 6 Outdoor Access Point

### Network Specifications

*Note: Some features will be included on subsequent firmware releases.*

<b>Operational Modes</b>	Standalone Cloud managed cnMaestro or VM Cloud managed XMS
--------------------------	--

<b>WLAN</b>	512 clients, 16 SSIDs WPA3, WPA-TKIP, WPA2 AES, 802.1x 802.11w PMF
-------------	--

<b>Authentication Encryption</b>	802.1x EAP-SIM/AKA, EAP-PEAP, EAP-TTLS, EAP-TLS MAC authentication to local database or external RADIUS
----------------------------------	---

<b>Scheduled WLAN</b>	On/off by day, week, time of day
-----------------------	----------------------------------

<b>Guest Access</b>	See "Captive Portal" section for additional details.
---------------------	--

<b>Data Limit</b>	Client bitrate/time/throughput limit per SSID
-------------------	---

<b>Subscriber QoS</b>	WMM
-----------------------	-----

<b>Fast Roaming</b>	802.11r, OKC, Enhanced roaming
---------------------	--------------------------------

<b>Mesh</b>	Multi-hop, either band
-------------	------------------------

<b>Channel Selection</b>	Multimodal channel selection with AutoChannel and AutoBand. Granular control of off-channel scan and channel selection
--------------------------	--

<b>RF Management</b>	Multimodal RF optimization supporting AutoCell performed in the intelligent edge AP. Out-of-band RF spectrum analysis, radio self test network assurance, RF monitor with chn/noise/interference  Data rate pruning and minimum data rates
----------------------	--

<b>Network</b>	LACP (802.3ad), TCP connection log, NAT logging firewall, DHCP server, L2, L3 or DNS based access control, VLAN Pooling, RADIUS attribute VID, VLAN per SSID per user
----------------	---

<b>Band Steer Load Balance</b>	Yes
--------------------------------	-----

<b>Tunnel</b>	L2TP, L2oGRE, PPPoE
---------------	---------------------

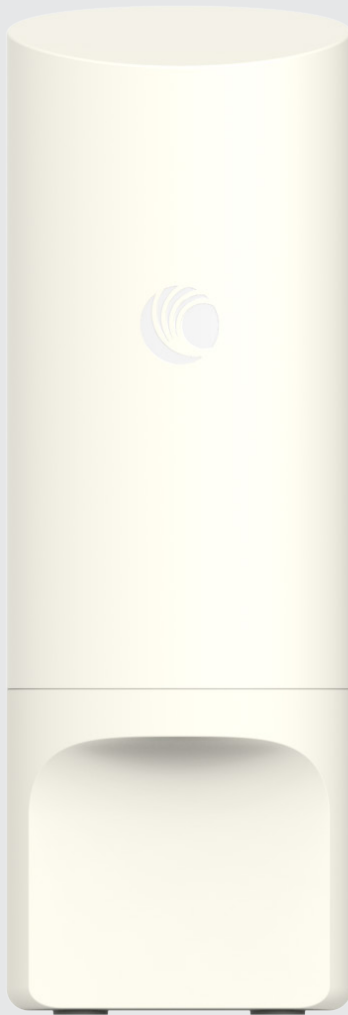
<b>Network and RF Management Tools</b>	Wired and wireless remote packet capture, auto logging, ZapD performance tool, rogue AP detection
--	---

<b>Services</b>	NTP, Syslog, SNMP traps, DNS proxy
-----------------	------------------------------------

### Standards

<b>Wi-Fi Protocols</b>	VHT MCS rates, 16/64/256/1024-QAM, 20/40/80 MHz
	TWT, Long OFDM Symbol, Transmit beamforming, Airtime Fairness, AMSDU, AMPDU, RIFS, STBC, LDPC, MIMO Power Save, MRC, BPSK, QPSK, CCK, DSSS, OFDM, OFDMA, UL/DL MU-MIMO
	IEEE 802.11 a/ac/ax/b/d/e/g/h/i/k/n/r/u/v

### XV2-2T Wi-Fi 6 Outdoor Access Point



Front View



Back Panel



Bottom View



Side View

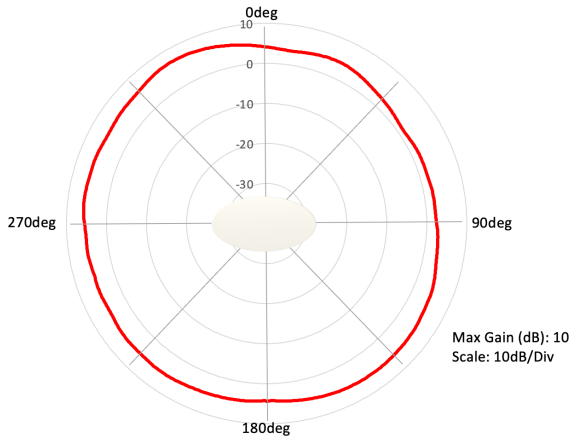


Front View

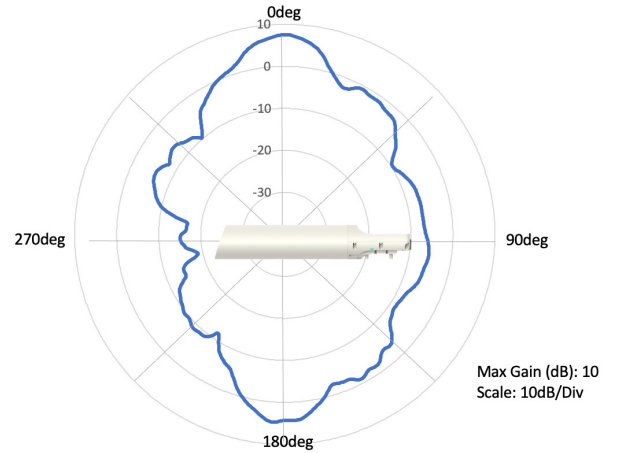
# XV2-2T Wi-Fi 6 Outdoor Access Point

## Antenna Patterns

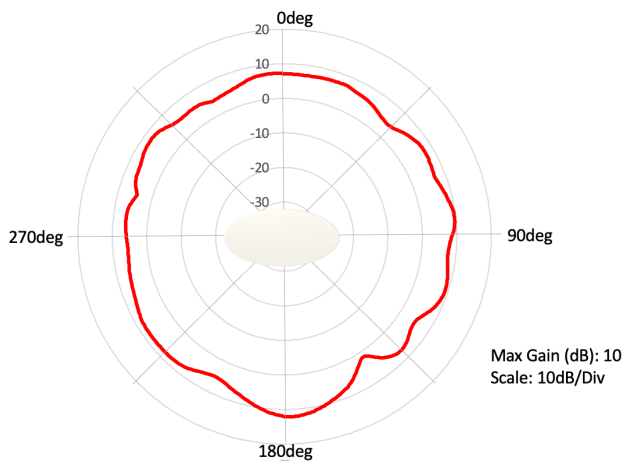
2.4 GHz Azimuth



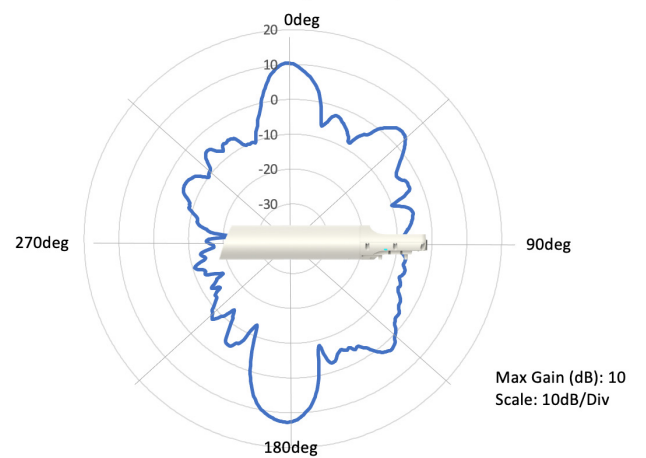
2.4 GHz Elevation



5 GHz Azimuth



5 GHz Elevation



## XV2-2T Wi-Fi 6 Outdoor Access Point

### Cambium Ordering Information

<b>REG-XV2-2T</b>	Regulatory Model
<b>XV2-2T0XA00-US</b>	XV2-2T Dual-Radio Wi-Fi 6. Outdoor (FCC) 802.11ax 2x2, Omni, US
<b>XV2-2T0XA00-CA</b>	XV2-2T Dual-Radio Wi-Fi 6. Outdoor (IC) 802.11ax 2x2, Omni, CA
<b>XV2-2T0XA00-EU</b>	XV2-2T Dual-Radio Wi-Fi 6. Outdoor (ETSI) 802.11ax 2x2, Omni, EU
<b>XV2-2T0XA00-RW</b>	XV2-2T Dual-Radio Wi-Fi 6. Outdoor 802.11ax 2x2, Omni, RW
<b>MSX-SUB-T3-1</b>	cnMaestro X for Enterprise: Advanced management and includes Cambium Care Pro Support; 1-year term
<b>MSX-SUB-T3-3</b>	cnMaestro X for Enterprise: Advanced management and includes Cambium Care Pro Support; 3-year term
<b>MSX-SUB-T3-5</b>	cnMaestro X for Enterprise: Advanced management and includes Cambium Care Pro Support; 5-year term
<b>XMSC-SUB-2R-1</b>	XMS-Cloud 1-year subscription: 2-radio AP with EasyPass Guest Self-Registration and Guest Ambassador modules and Cambium Care Advanced Support
<b>XMSC-SUB-2R-3</b>	XMS-Cloud 3-year subscription: 2-radio AP with EasyPass Guest Self-Registration and Guest Ambassador modules and Cambium Care Advanced Support
<b>XMSC-SUB-2R-5</b>	XMS-Cloud 5-year subscription: 2-radio AP with EasyPass Guest Self-Registration and Guest Ambassador modules and Cambium Care Advanced Support
<b>EASY-SUB-2R-1</b>	EasyPass 1-year subscription for a 2-radio AP operating with XMS-Cloud or XMS-Enterprise
<b>EASY-SUB-2R-3</b>	EasyPass 3-year subscription for a 2-radio AP operating with XMS-Cloud or XMS-Enterprise
<b>EASY-SUB-2R-5</b>	EasyPass 5-year subscription for a 2-radio AP operating with XMS-Cloud or XMS-Enterprise
<b>CCADV-SUP-XV2-2T-1</b>	Cambium Care Advanced, 1-year support for one XV2-2T Wi-Fi 6 AP. 24x7 TAC support, SW updates, and NBD advance replacement for HW
<b>CCADV-SUP-XV2-2T-3</b>	Cambium Care Advanced, 3-year support for one XV2-2T Wi-Fi 6 AP. 24x7 TAC support, SW updates, and NBD advance replacement for HW
<b>CCADV-SUP-XV2-2T-5</b>	Cambium Care Advanced, 5-year support for one XV2-2T Wi-Fi 6 AP. 24x7 TAC support, SW updates, and NBD advance replacement for HW
<b>CCPRO-SUP-XV2-2T-1</b>	Cambium Care Pro, 1-year support for one XV2-2T Wi-Fi 6 AP. 24x7 TAC support and SW updates
<b>CCPRO-SUP-XV2-2T-3</b>	Cambium Care Pro, 3-year support for one XV2-2T Wi-Fi 6 AP. 24x7 TAC support and SW updates
<b>CCPRO-SUP-XV2-2T-5</b>	Cambium Care Pro, 5-year support for one XV2-2T Wi-Fi 6 AP. 24x7 TAC support and SW updates

## XV2-2T Wi-Fi 6 Access Point

### Cambium Ordering Information

<b>N000000L142A</b>	PoE, 60W, 56V, 5GbE DC Injector, Indoor, Energy Level 6 Supply, accepts C5 connector
<b>N000900L031A</b>	AC line cord, US Type B, 720mm, C5 connector
<b>N000900L032A</b>	AC line cord, EU Type F angled, 720mm, C5 connector
<b>N000900L033A</b>	AC line cord, UK Type G angled, 720mm, C5 connector
<b>N000900L034A</b>	AC line cord, BR Type N, 720mm, C5 connector
<b>N000900L011A</b>	AC line cord, AU Type I, 720mm, C5 connector
<b>N000900L012A</b>	AC line cord, IN Type D angled, 720mm, C5 connector
<b>N000900L013A</b>	AC line cord, AR Type I, 720mm, C5 connector
<b>N000900L015A</b>	AC line cord, CN Type I, 720mm, C5 connector
<b>N000900L048A</b>	AC line cord, ZA Type M angled, 720mm, C5 connector

### LIMITED WARRANTY

Cambium Networks XV2-2T Wi-Fi 6 Access Point includes  
a 3-year hardware warranty.

#### ABOUT CAMBIUM NETWORKS

Cambium Networks empowers millions of people with wireless connectivity worldwide. Its wireless portfolio is used by commercial and government network operators as well as broadband service providers to connect people, places and things. With a single network architecture spanning fixed wireless and Wi-Fi, Cambium Networks enables operators to achieve maximum performance with minimal spectrum. End-to-end cloud management transforms networks into dynamic environments that evolve to meet changing needs with minimal physical human intervention. Cambium Networks empowers a growing ecosystem of partners who design and deliver gigabit wireless solutions that just work.

[cambiumnetworks.com](http://cambiumnetworks.com)

07152021